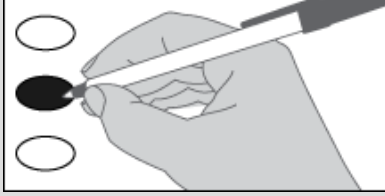


OFFICIAL SAMPLE BALLOT
Clallam County, Washington
August 2, 2022
Primary

Instructions

How to Vote

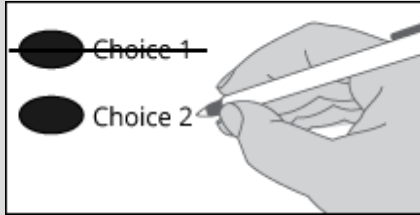


Use a dark colored pen to completely fill in the oval to the left of your choice.

Vote for one in each contest.

If you vote for more than one choice, your vote will not count for that race or measure.

How to Correct a Vote



To make a correction, draw a line through the entire incorrect choice. You then have the option of making another choice.

Optional Write-in

To vote for a write-in candidate, fill in the oval next to the write-in line and print the name.

Need Voter Assistance?

For a replacement ballot or for information on Accessible Voting Units (available 20 days before Election Day) please call us at: **(360) 417-2221**.

Need More Information on Candidates?

View candidate information in your mailed *Local Voters' Pamphlet* or in the *Online Voters' Guide* at: www.clallam.net/elections.

Who Donates to Campaigns?

For a list of the people and organizations that donated to state and local candidates and ballot measure campaigns, visit: www.pdc.wa.gov.

Returning Your Ballot

By Mail: Ballots must be post-marked on or before Election Day to be counted.

By Official Drop Box: Ballots must be deposited inside an Official Drop Box by 8:00 p.m. on Election Night to be counted.

See insert for Official Drop Box locations.

READ: Each candidate for partisan office may state a political party that he or she prefers. A candidate's preference does not imply that the candidate is nominated or endorsed by the party, or that the party approves of or associates with that candidate.

Federal: Partisan Offices

U.S. Senator
6-Year Term

- Henry Clay Dennison** *(Prefers Socialist Workers Party)*
- Mohammad Hassan Said** *(Prefers Democratic Party)*
- John Guenther** *(Prefers Republican Party)*
- Tiffany Smiley** *(Prefers Republican Party)*
- Dan Phan Doan** *(States No Party Preference)*
- Dr Pano Churchill** *(Prefers Democratic Party)*
- Dave Saulibio** *(Prefers JFK Republican Party)*
- Sam Cusmir** *(Prefers Democratic Party)*
- Bill Hirt** *(Prefers Republican Party)*
- Jon Butler** *(Prefers Independent Party)*
- Bryan Solstin** *(Prefers Democratic Party)*
- Martin D. Hash** *(States No Party Preference)*
- Patty Murray** *(Prefers Democratic Party)*
- Thor Amundson** *(Prefers Independent Party)*
- Charlie (Chuck) Jackson** *(Prefers Independent Party)*
- Naz Paul** *(Prefers Independent Party)*
- Ravin Pierre** *(Prefers Democratic Party)*
- Leon Lawson** *(Prefers Trump Republican Party)*
- _____

Congressional District 6
U.S. Representative
2-Year Term

- Rebecca Parson** *(Prefers Democratic Party)*
- Tom Triggs** *(Prefers Independent Party)*
- Derek Kilmer** *(Prefers Democratic Party)*
- Chris Binns** *(Prefers Republican Party)*
- Todd A Bloom** *(Prefers Republican Party)*
- Elizabeth Kreislermaier** *(Prefers Republican Party)*
- _____

Vote Both Sides

OFFICIAL SAMPLE BALLOT
Clallam County, Washington
August 2, 2022
Primary

State: Partisan Offices

Secretary of State
2-Year Unexpired Term

- Bob Hagglund** *(Prefers Republican Party)*
- Kurtis Engle** *(Prefers Union Party)*
- Marquez Tiggs** *(Prefers Democratic Party)*
- Tamborine Borrelli** *(Prefers America First (R) Party)*
- Steve Hobbs** *(Prefers Democratic Party)*
- Keith L. Wagoner** *(Prefers Republican Party)*
- Mark Miloscia** *(Prefers Republican Party)*
- Julie Anderson** *(Prefers Nonpartisan Party)*
- _____

Precinct Committee Officer

For this office only: In order to vote for precinct committee officer, a partisan office, you must affirm that you are a Democrat or a Republican and may vote only for one candidate from the party you select. Your vote for a candidate affirms your affiliation with the same party as the candidate. This preference is private and will not be matched to your name or shared.

Republican Party Candidates
Clallam Bay Precinct 215
2-Year Term

- Tyson Hester**
I affirm I am a Republican
- Greg L. Bellamy**
I affirm I am a Republican

Legislative District 24
State Representative Position 1
2-Year Term

- Sue Forde** *(Prefers Republican Party)*
- Mike Chapman** *(Prefers Democratic Party)*
- Matthew Rainwater** *(Prefers Republican Party)*
- _____

Legislative District 24
State Representative Position 2
2-Year Term

- Steve Tharinger** *(Prefers Democratic Party)*
- Darren Corcoran** *(Prefers Democratic Party)*
- Brian Pruiett** *(Prefers Republican Party)*
- _____

County: Partisan Office

Commissioner - District No. 3
4-Year Term

- Mike French** *(Prefers Democratic Party)*
- Bill Peach** *(Prefers Republican Party)*
- _____

County: Nonpartisan Office

Director of Community Development
4-Year Term

- Cherie Kidd**
- Kevin Russell**
- Jesse Major**
- Bruce Emery**
- _____

End of Ballot