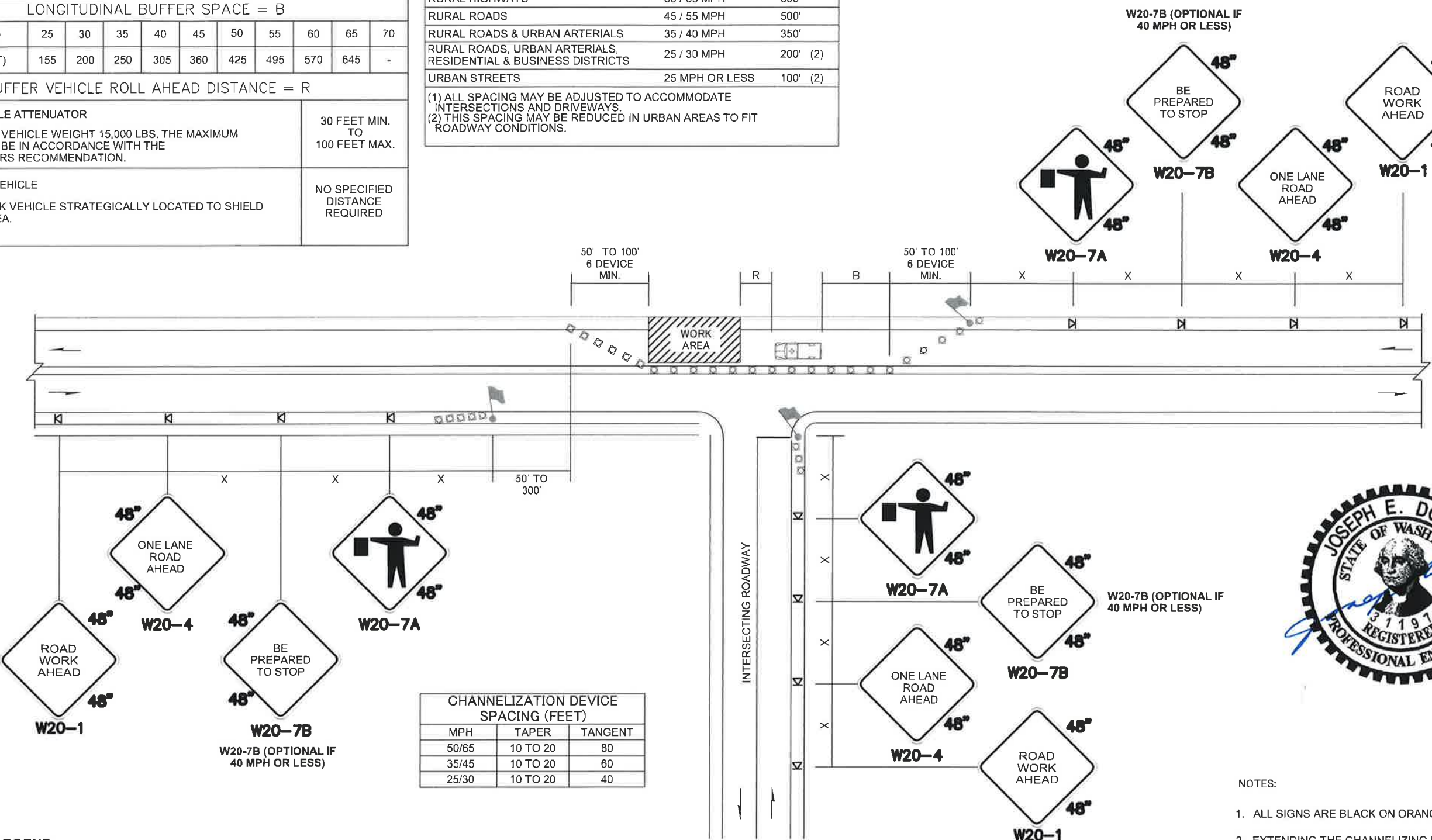


BUFFER DATA										
LONGITUDINAL BUFFER SPACE = B										
SPEED (MPH)	25	30	35	40	45	50	55	60	65	70
LENGTH (FEET)	155	200	250	305	360	425	495	570	645	-
BUFFER VEHICLE ROLL AHEAD DISTANCE = R										
TRANSPORTABLE ATTENUATOR								30 FEET MIN. TO 100 FEET MAX.		
MINIMUM HOST VEHICLE WEIGHT 15,000 LBS. THE MAXIMUM WEIGHT SHALL BE IN ACCORDANCE WITH THE MANUFACTURERS RECOMMENDATION.										
PROTECTIVE VEHICLE								NO SPECIFIED DISTANCE REQUIRED		
MAY BE A WORK VEHICLE STRATEGICALLY LOCATED TO SHIELD THE WORK AREA.										

SIGN SPACING = X (1)		
RURAL HIGHWAYS	60 / 65 MPH	800'
RURAL ROADS	45 / 55 MPH	500'
RURAL ROADS & URBAN ARTERIALS	35 / 40 MPH	350'
RURAL ROADS, URBAN ARTERIALS, RESIDENTIAL & BUSINESS DISTRICTS	25 / 30 MPH	200' (2)
URBAN STREETS	25 MPH OR LESS	100' (2)

(1) ALL SPACING MAY BE ADJUSTED TO ACCOMMODATE INTERSECTIONS AND DRIVEWAYS.
(2) THIS SPACING MAY BE REDUCED IN URBAN AREAS TO FIT ROADWAY CONDITIONS.



CHANNELIZATION DEVICE SPACING (FEET)		
MPH	TAPER	TANGENT
50/65	10 TO 20	80
35/45	10 TO 20	60
25/30	10 TO 20	40



- NOTES:
1. ALL SIGNS ARE BLACK ON ORANGE.
 2. EXTENDING THE CHANNELIZING DEVICE TAPER ACROSS SHOULDER IS RECOMMENDED.
 3. NIGHT WORK REQUIRES ADDITIONAL ROADWAY LIGHTING AT FLAGGING STATIONS. SEE THE STANDARD SPECIFICATIONS FOR ADDITIONAL DETAILS.

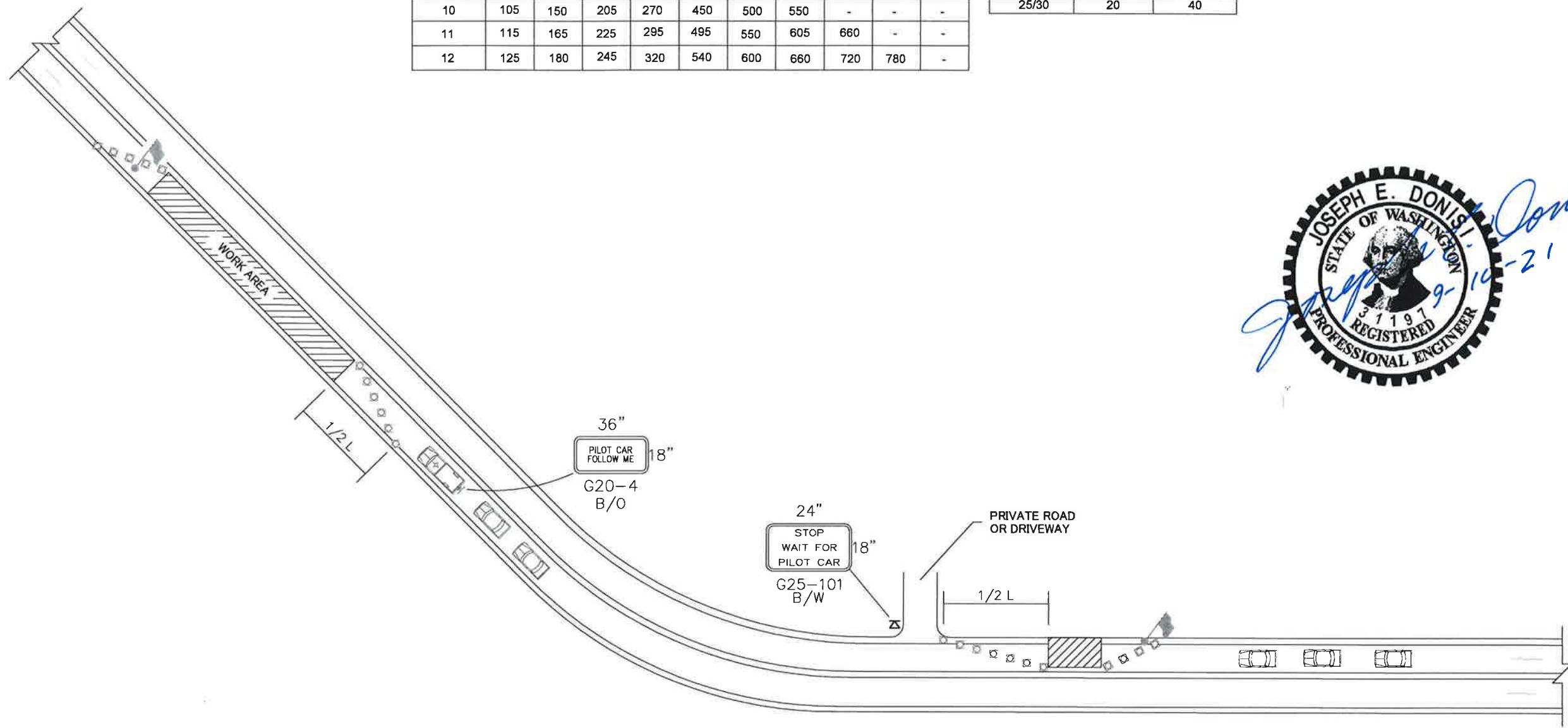
ONE-LANE, TWO-WAY TRAFFIC CONTROL WITH FLAGGERS

NOT TO SCALE

FILE NAME		REGION NO.	STATE	FED. AID PROJ. NO.		CLALLAM COUNTY TRAFFIC CONTROL PLAN	TC1
TIME			WASH	N/A			
DATE							
PLOTTED BY							
DESIGNED BY							
ENTERED BY							
CHECKED BY							
PROJ. ENGR.							
REGIONAL ADM.							
REVISION		DATE	BY	CONTRACT NO. CRP C1258	LOCATION NO.		

LANE WIDTH (feet)	MINIMUM TAPER LENGTH = L (feet)									
	Posted Speed (mph)									
	25	30	35	40	45	50	55	60	65	70
10	105	150	205	270	450	500	550	-	-	-
11	115	165	225	295	495	550	605	660	-	-
12	125	180	245	320	540	600	660	720	780	-

CHANNELIZATION DEVICE SPACING (feet)		
MPH	TAPER	TANGENT
50/65	40	80
35/45	30	60
25/30	20	40



- LEGEND**
- FLAGGING STATION
 - TEMPORARY SIGN LOCATION
 - CHANNELIZING DEVICES
 - PILOT VEHICLE
 - MOTORIST VEHICLE

PILOT CAR OPERATION
NOT TO SCALE

- NOTES:
- REFER TO SHEET TC1 FOR ADDITIONAL SIGNING AND FLAGGING DETAILS NOT SHOWN.
 - CHANNELIZING DEVICES ARE RECOMMENDED ALONG CENTERLINE TO SEPARATE TRAFFIC FROM WORK OPERATION. DEVICES ARE REQUIRED AT TAPERS TO SHIFT TRAFFIC MOVEMENT BETWEEN LANES AND TO PROTECT FLAGGING STATIONS.
 - SIGN G25-101 IS RECOMMENDED FOR NON-STOP SIGN CONTROLLED APPROACHES SUCH AS PRIVATE ROADS AND DRIVEWAYS. THIS SIGN IS NOT REQUIRED TO BE ALUMINUM SUBSTRATE AND CAN BE MADE OF ALTERNATIVE MATERIALS.

FILE NAME		REGION NO.		STATE	FED.AID PROJ.NO.		CLALLAM COUNTY ROAD DEPARTMENT
TIME			WASH		N/A		
DATE			JOB NUMBER		LOCATION NO.		
PLOTTED BY			CONTRACT NO.	CRP			
DESIGNED BY			C1258				TRAFFIC CONTROL PLAN
ENTERED BY							TC2
CHECKED BY							
PROJ. ENGR.							
REGIONAL ADM.							
	REVISION	DATE	BY				

SIGN SPACING = X (1)		
FREeways & EXPRESSWAYS	55 / 70 MPH	1500'
RURAL HIGHWAYS	60 / 65 MPH	800'
RURAL ROADS	45 / 55 MPH	500'

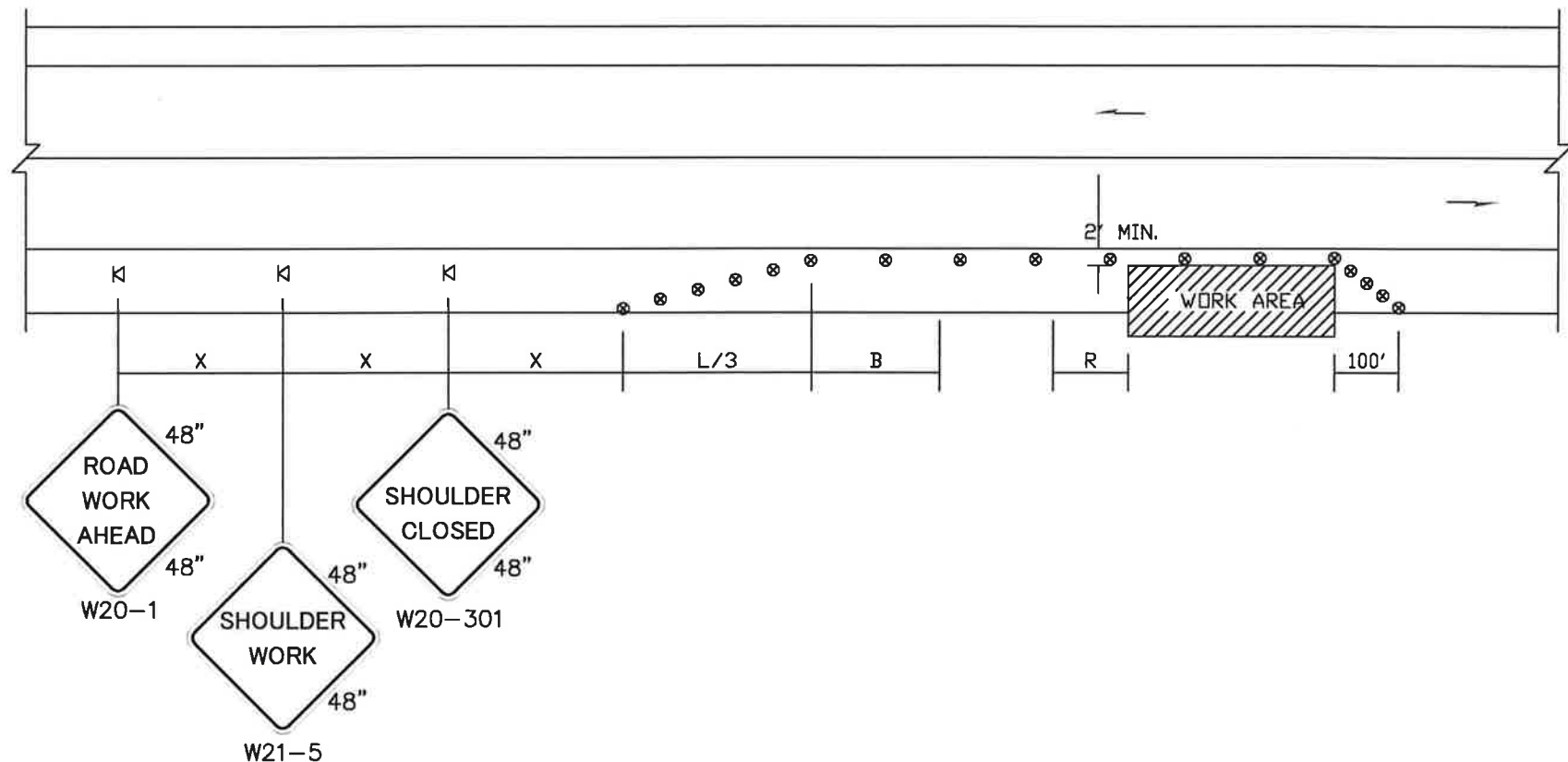
(1) ALL SPACING MAY BE ADJUSTED TO ACCOMMODATE INTERCHANGE RAMPS, AT-GRADE INTERSECTIONS AND DRIVEWAYS.

MINIMUM SHOULDER TAPER LENGTH = L/3 (feet)										
SHOULDER WIDTH (feet)	Posted Speed (mph)									
	25	30	35	40	45	50	55	60	65	70
8'	-	-	-	-	120	130	150	160	170	190
10'	-	-	-	-	150	170	190	200	220	240

USE A MINIMUM 3 DEVICES TAPER FOR SHOULDER LESS THEN 8'.

CHANNELIZATION DEVICE SPACING (feet)		
MPH	TAPER	TANGENT
50/70	40	80
35/45	30	60

BUFFER DATA											
LONGITUDINAL BUFFER SPACE = B											
SPEED (MPH)	25	30	35	40	45	50	55	60	65	70	
LENGTH (feet)	-	-	-	-	360	425	495	570	645	730	
BUFFER VEHICLE ROLL AHEAD DISTANCE = R											
TRANSPORTABLE ATTENUATOR										30 FEET MIN. TO 100 FEET MAX.	
MINIMUM HOST VEHICLE WEIGHT 15,000 LBS. THE MAXIMUM WEIGHT SHALL BE IN ACCORDANCE WITH THE MANUFACTURERS RECOMMENDATION.											



- LEGEND**
- K TEMPORARY SIGN LOCATION
 - ⊗ CONES

SHOULDER CLOSURE – HIGH SPEED

NOT TO SCALE

- NOTES:**
- NO ENCROACHMENT IN TRAVELED LANE. IF ENCROACHMENT IS NECESSARY, LANE SHALL BE CLOSED.
 - DEVICE SPACING FOR THE DOWNSTREAM TAPER SHALL BE 20' (FT) O.C.
 - ALL SIGNS ARE BLACK ON ORANGE.

FILE NAME		REGION NO.	STATE	FED.AID PROJ.NO.		CLALLAM COUNTY	TRAFFIC CONTROL PLAN	TC6
TIME			WASH		N/A			
DATE								
PLOTTED BY								
DESIGNED BY								
ENTERED BY								
CHECKED BY								
PROJ. ENGR.								
REGIONAL ADM.								
REVISION		DATE	BY	CONTRACT NO. CRP C1258	LOCATION NO.			