

# 2021 COUNTYWIDE OVERLAY PROJECT

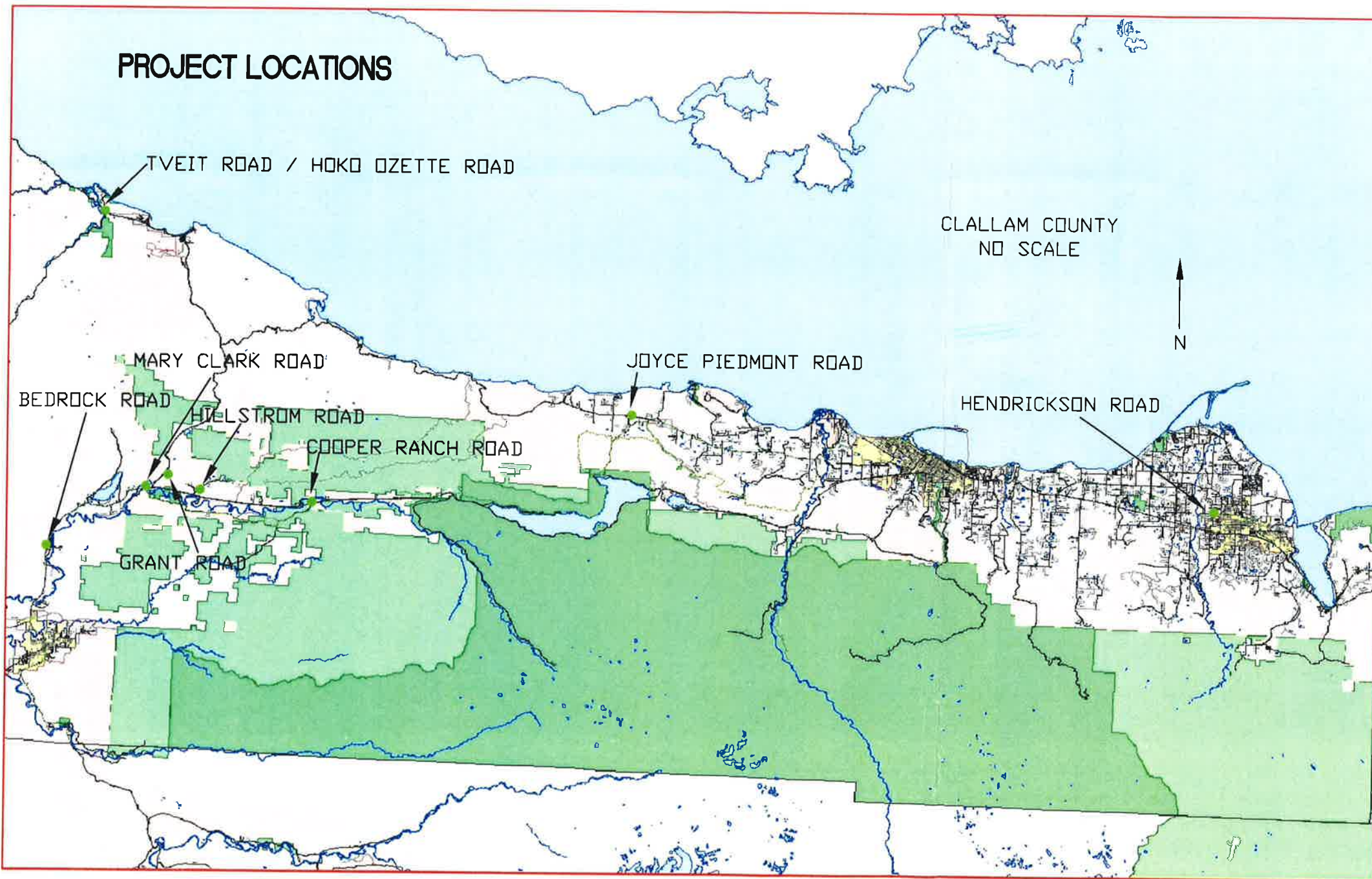
CLALLAM COUNTY, WASHINGTON

CRP# C1258

- INTERSECTION OF COOPER RANCH ROAD (20650) AND US101
- INTERSECTION OF HILLSTROM ROAD (20310) AND US101
- INTERSECTION OF MARY CLARK (20360) AND US101
- INTERSECTION OF GRANT ROAD (20160) AND SR113
- INTERSECTION OF HOKO OZETTE ROAD (91460) AND SR112
- INTERSECTION OF TVEIT ROAD (17960) AND SR112
- INTERSECTION OF BEDROCK ROAD (15090) AND US101
- JOYCE PIEDMONT ROAD (92210) VARIOUS LOCATIONS
- ADDITIVE ALTERNATE 1 (ONE)
- HENDRICKSON ROAD (51740) FROM PRIEST (51590) ROAD TO SEQUIM CITY LIMITS



Know what's below.  
Call before you dig.



PROJECT LOCATIONS OVERVIEW

**CLALLAM COUNTY**

*R. Tyler, P.E.*  
ROSS TYLER, PE - COUNTY ENGINEER

**BOARD OF CLALLAM COUNTY COMMISSIONERS**

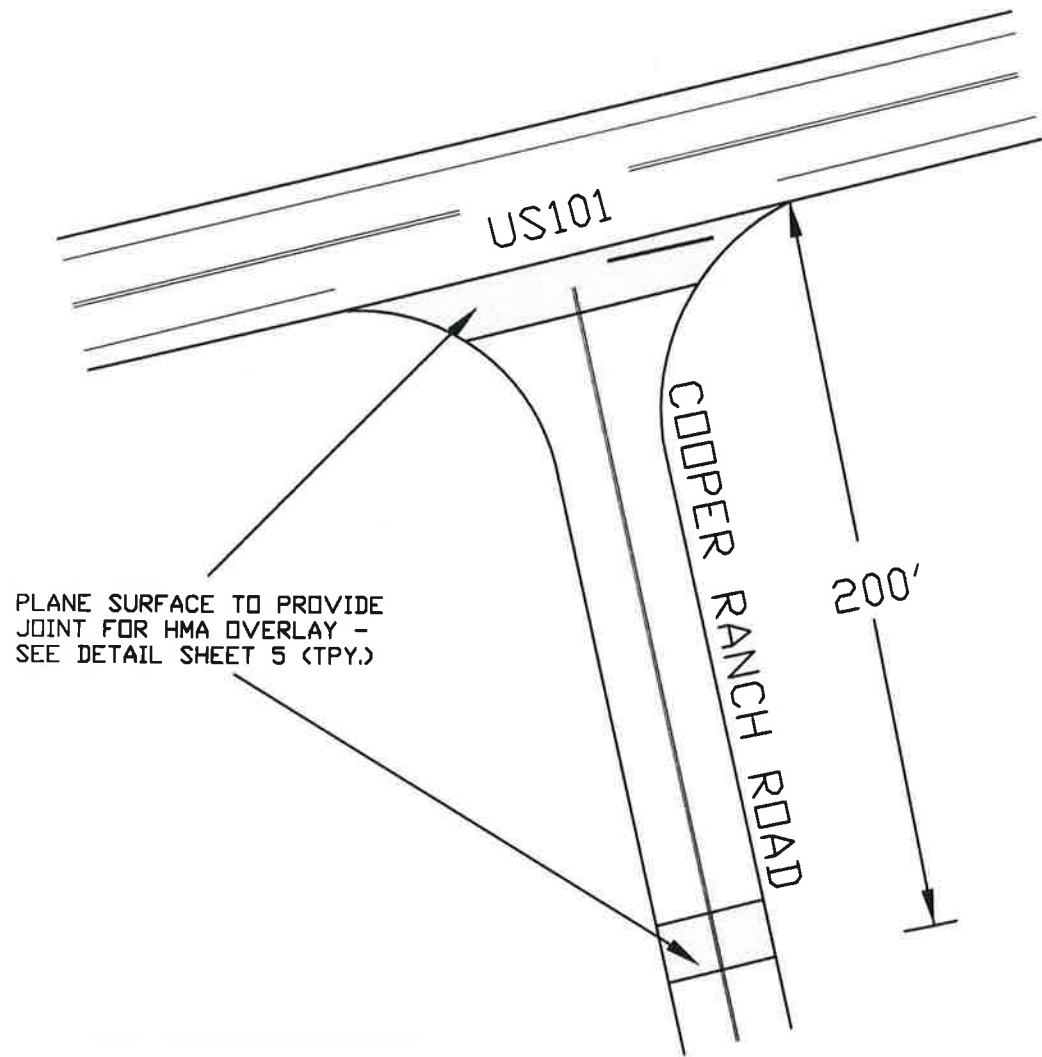
*Mark Dizes*  
Mark Dizes, CHAIRMAN

Randy Johnson, Commissioner

*Bill Peach*  
Bill Peach, Commissioner

INTERSECTION OF COOPER RANCH ROAD AND US101

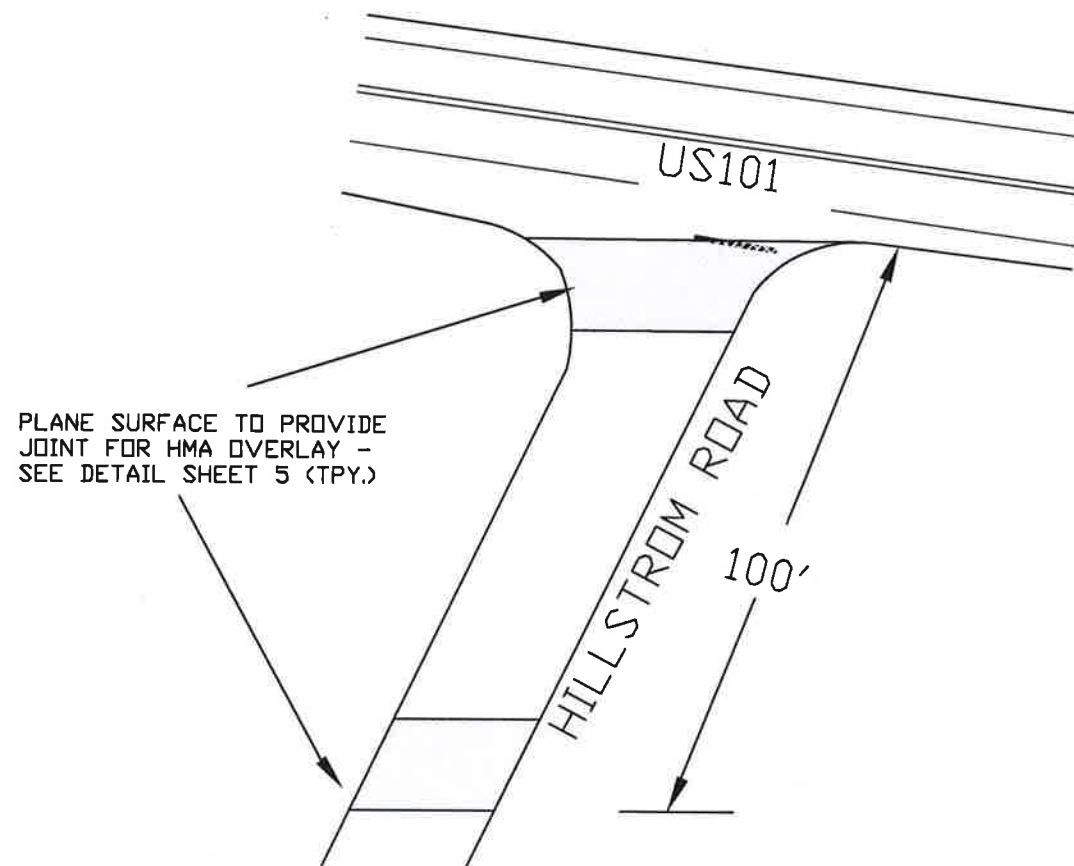
SEC 27, TWN 30N, RNG 11W  
CLALLAM COUNTY, WASHINGTON



PLANE TO NEW US101 AND SR112 RECENTLY APPLIED CHIP SEAL, AS NEEDED (TYP)

INTERSECTION OF HILLSTROM ROAD AND US101

SEC 27, TWN 30N, RNG 12W  
CLALLAM COUNTY, WASHINGTON



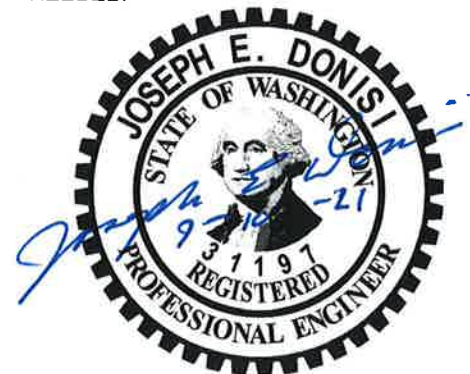
2021 COUNTYWIDE  
OVERLAY PROJECT  
CRP C1258



NO SCALE

GENERAL NOTES:

- 1) HMA OVERLAY DEPTH SHALL NOT EXCEED 0.15' DEPTH.
- 2) TACK COAT SHALL BE APPLIED IN HMA OVERLAY AREAS
- 3) PLANE TO NEW US101 AND SR112 RECENTLY APPLIED CHIP SEAL, AS NEEDED.
- 4) ALL JOINTS SHALL BE SEALED.
- 5) PLACE CRUSHED SURFACING TOP COURSE ALONG SHOULDER EDGE
- 6) REPLACE PAINT LINE AND STOP LINES, AS DIRECTED BY THE ENGINEER.
- 7) DISTANCES SHOWN ON PLAN SHEETS ARE APPROXIMATE, INDIVIDUAL PROJECT LIMITS WILL BE MARKED BY ENGINEER.
- 8) PROVIDE TRAFFIC CONTROL, COORDINATE WITH WSDOT AS NEEDED.

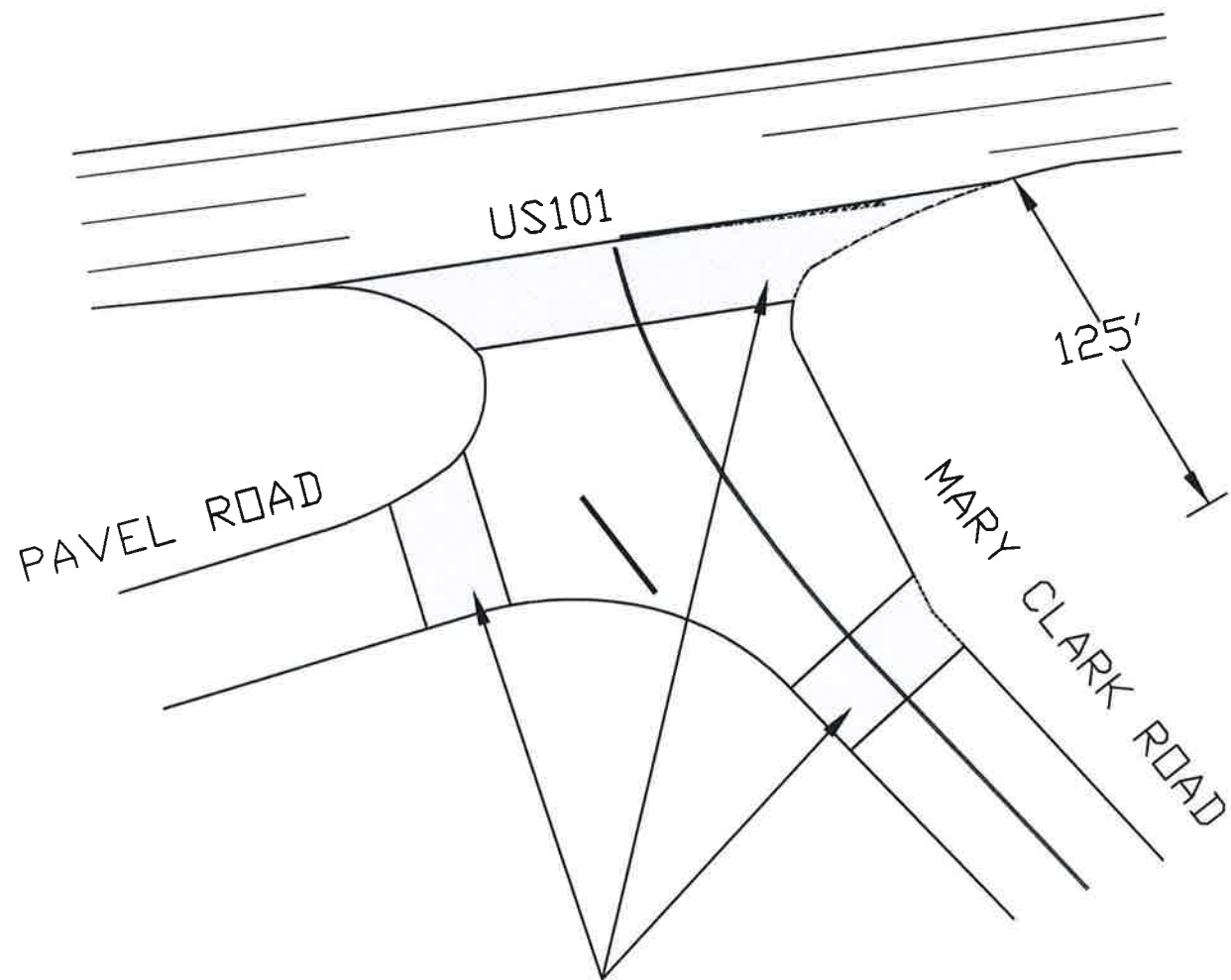


ROSS TYLER, PE  
COUNTY ROAD ENGINEER

AUTOCAD: S. HOFFMAN      SEPTEMBER, 2021

INTERSECTION OF MARY CLARK ROAD  
AND US101

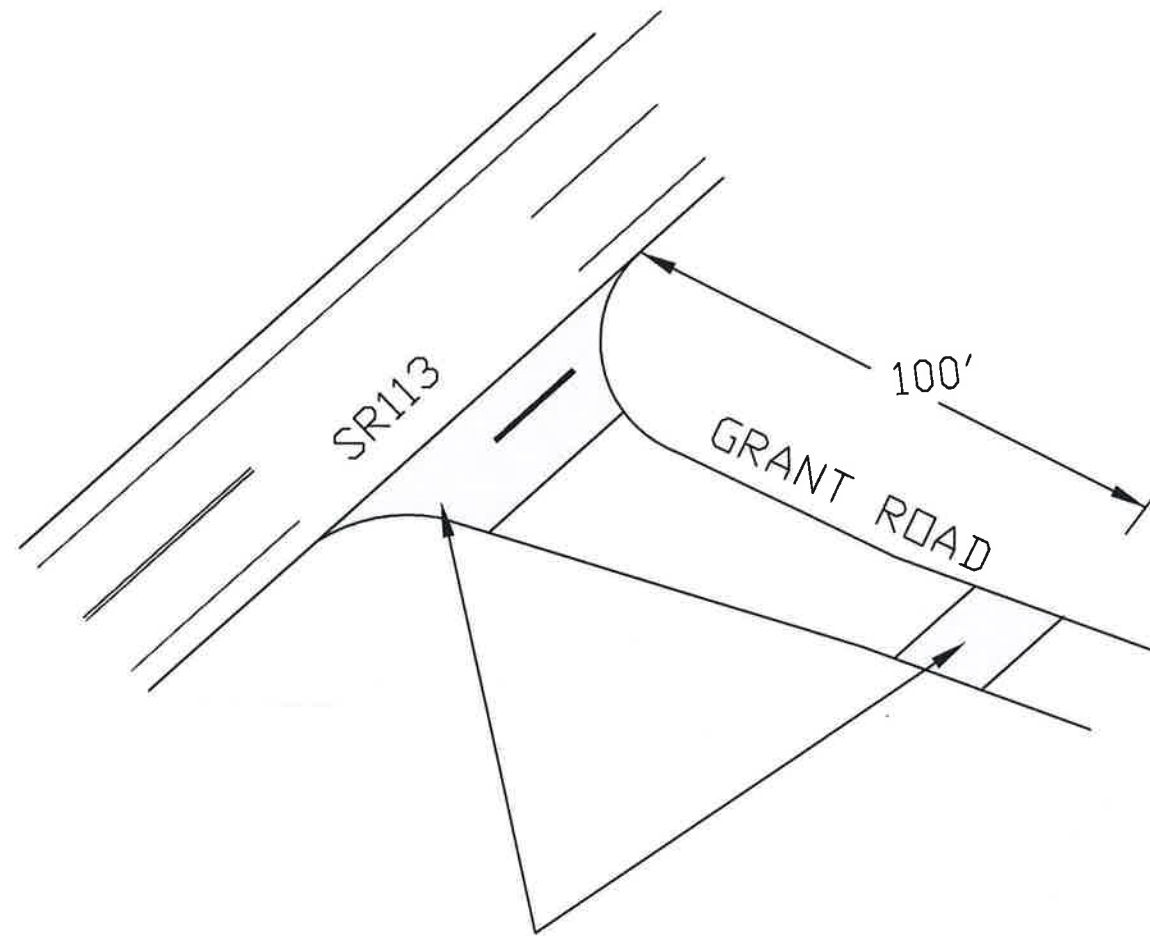
SEC 30, TWN 30N, RNG 12W  
CLALLAM COUNTY, WASHINGTON



PLANE SURFACE TO PROVIDE  
JOINT FOR HMA OVERLAY -  
SEE DETAIL SHEET 5 (TPY.)

INTERSECTION OF GRANT  
ROAD AND SR113

SEC 30, TWN 30N, RNG 12W  
CLALLAM COUNTY, WASHINGTON



PLANE SURFACE TO PROVIDE  
JOINT FOR HMA OVERLAY -  
SEE DETAIL SHEET 5 (TPY.)

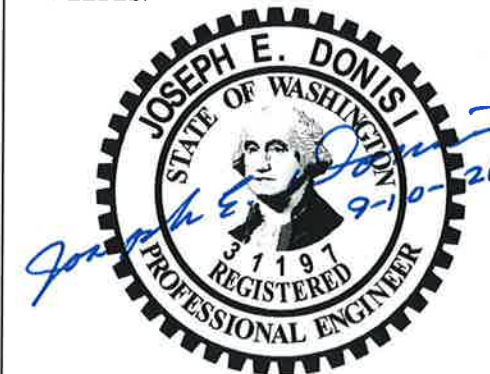
2021 COUNTYWIDE  
OVERLAY PROJECT  
CRP C1258



NO SCALE

GENERAL NOTES:

- 1) HMA OVERLAY DEPTH SHALL NOT EXCEED 0.15' DEPTH.
- 2) TACK COAT SHALL BE APPLIED IN HMA OVERLAY AREAS
- 3) PLANE TO NEW US101 AND SR112 RECENTLY APPLIED CHIP SEAL, AS NEEDED.
- 4) ALL JOINTS SHALL BE SEALED.
- 5) PLACE CRUSHED SURFACING TOP COURSE ALONG SHOULDER EDGE
- 6) REPLACE PAINT LINE AND STOP LINES, AS DIRECTED BY THE ENGINEER.
- 7) DISTANCES SHOWN ON PLAN SHEETS ARE APPROXIMATE, INDIVIDUAL PROJECT LIMITS WILL BE MARKED BY ENGINEER.
- 8) PROVIDE TRAFFIC CONTROL. COORDINATE WITH WSDOT AS NEEDED.



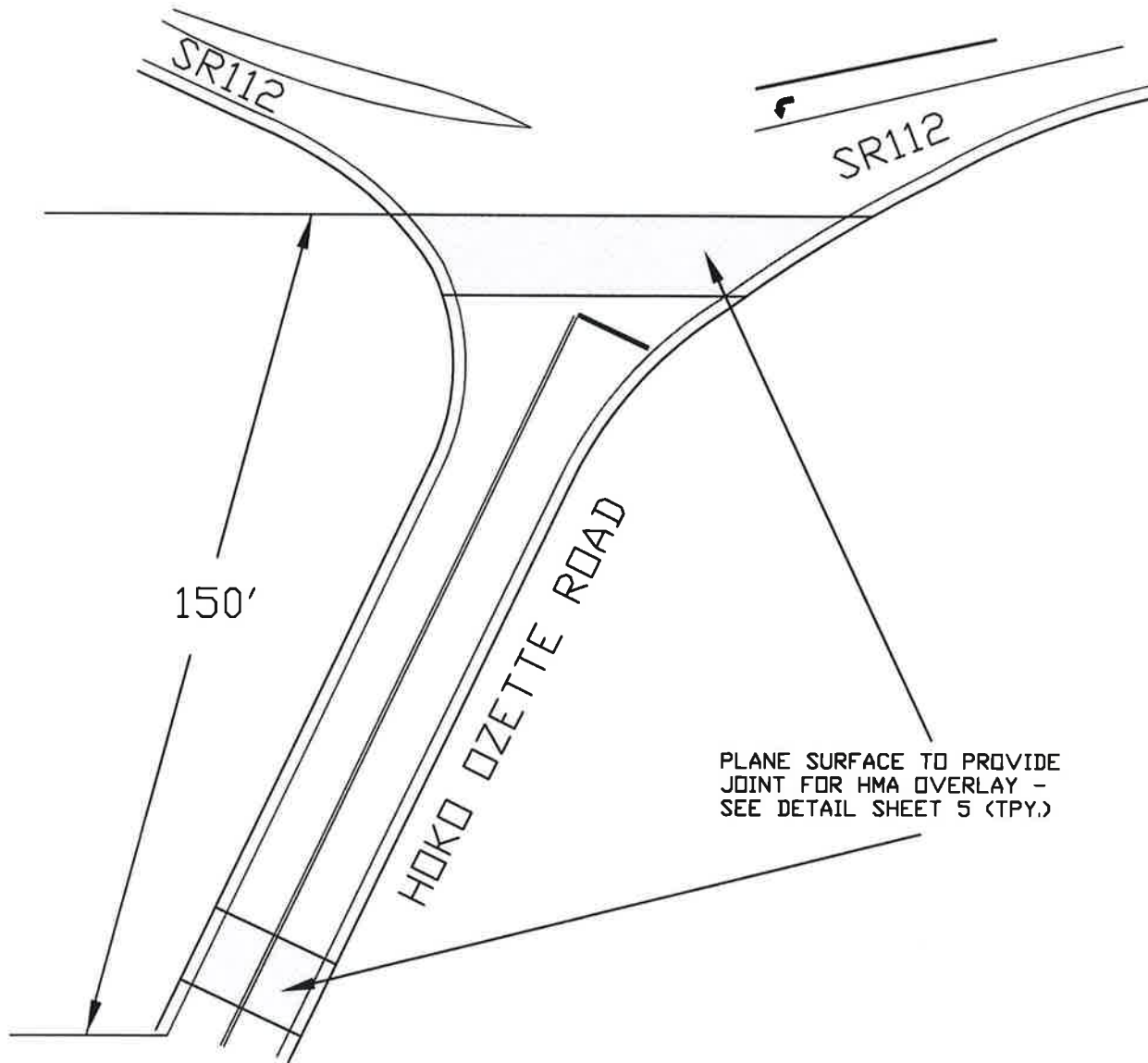
ROSS TYLER, PE  
COUNTY ROAD ENGINEER

AUTOCAD: S. HOFFMAN      SEPTEMBER, 2021

SHEET 3 OF 7

INTERSECTION OF HOKO  
OZETTE ROAD AND SR112

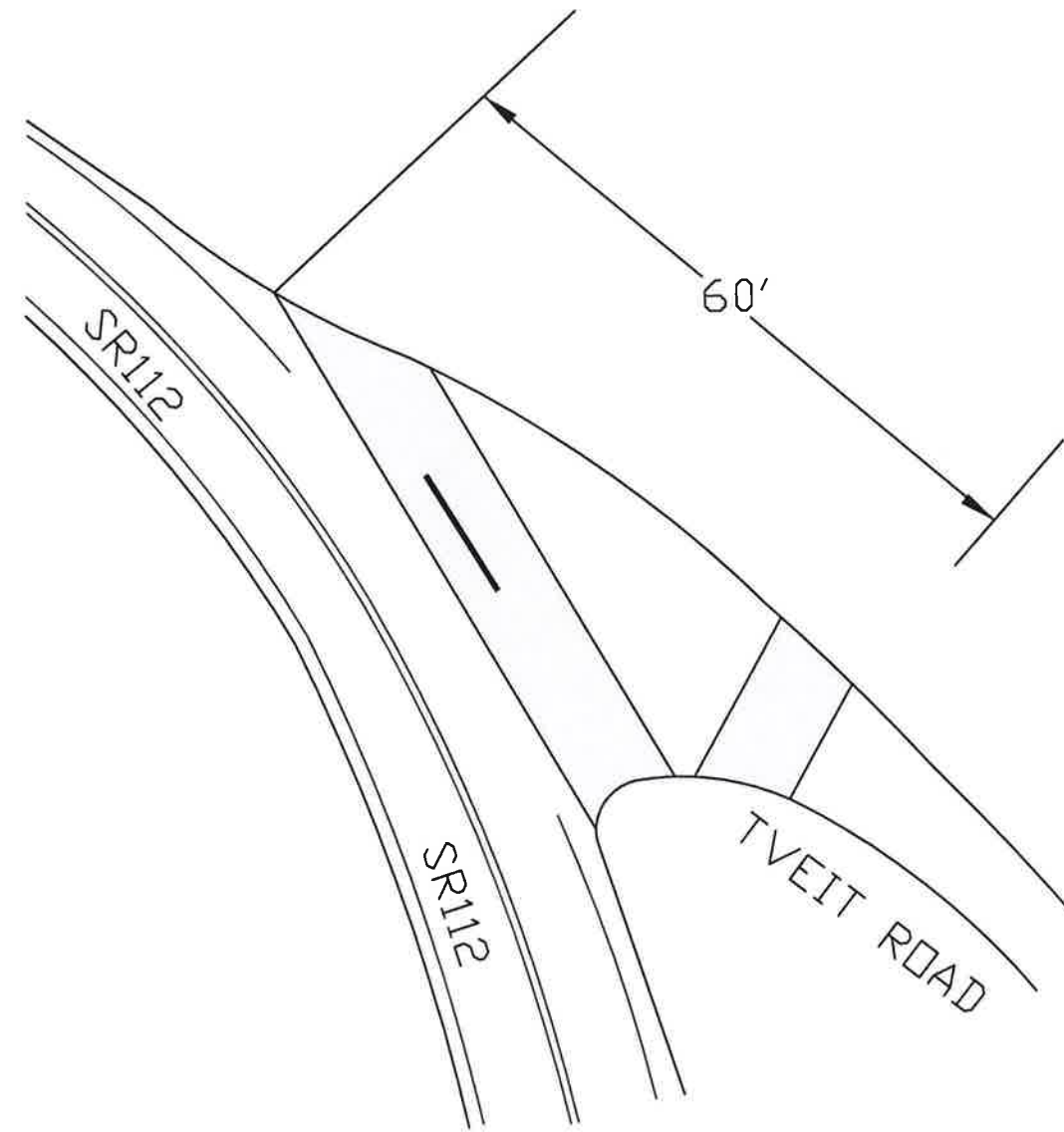
SEC 14, TWN 32N, RNG 13W  
CLALLAM COUNTY, WASHINGTON



PLANE SURFACE TO PROVIDE  
JOINT FOR HMA OVERLAY -  
SEE DETAIL SHEET 5 (TPY.)

INTERSECTION OF TVEIT  
ROAD AND SR112

SEC 14, TWN 32N, RNG 13W  
CLALLAM COUNTY, WASHINGTON



PLANE SURFACE TO PROVIDE  
JOINT FOR HMA OVERLAY -  
SEE DETAIL SHEET 5 (TPY.)

2021 COUNTYWIDE  
OVERLAY PROJECT  
CRP C1258



NO SCALE

GENERAL NOTES:

- 1) HMA OVERLAY DEPTH SHALL NOT EXCEED 0.15' DEPTH.
- 2) TACK COAT SHALL BE APPLIED IN HMA OVERLAY AREAS
- 3) PLANE TO NEW US101 AND SR112 RECENTLY APPLIED CHIP SEAL, AS NEEDED.
- 4) ALL JOINTS SHALL BE SEALED.
- 5) PLACE CRUSHED SURFACING TOP COURSE ALONG SHOULDER EDGE
- 6) REPLACE PAINT LINE AND STOP LINES, AS DIRECTED BY THE ENGINEER.
- 7) DISTANCES SHOWN ON PLAN SHEETS ARE APPROXIMATE, INDIVIDUAL PROJECT LIMITS WILL BE MARKED BY ENGINEER.
- 8) PROVIDE TRAFFIC CONTROL. COORDINATE WITH WSDOT AS NEEDED.

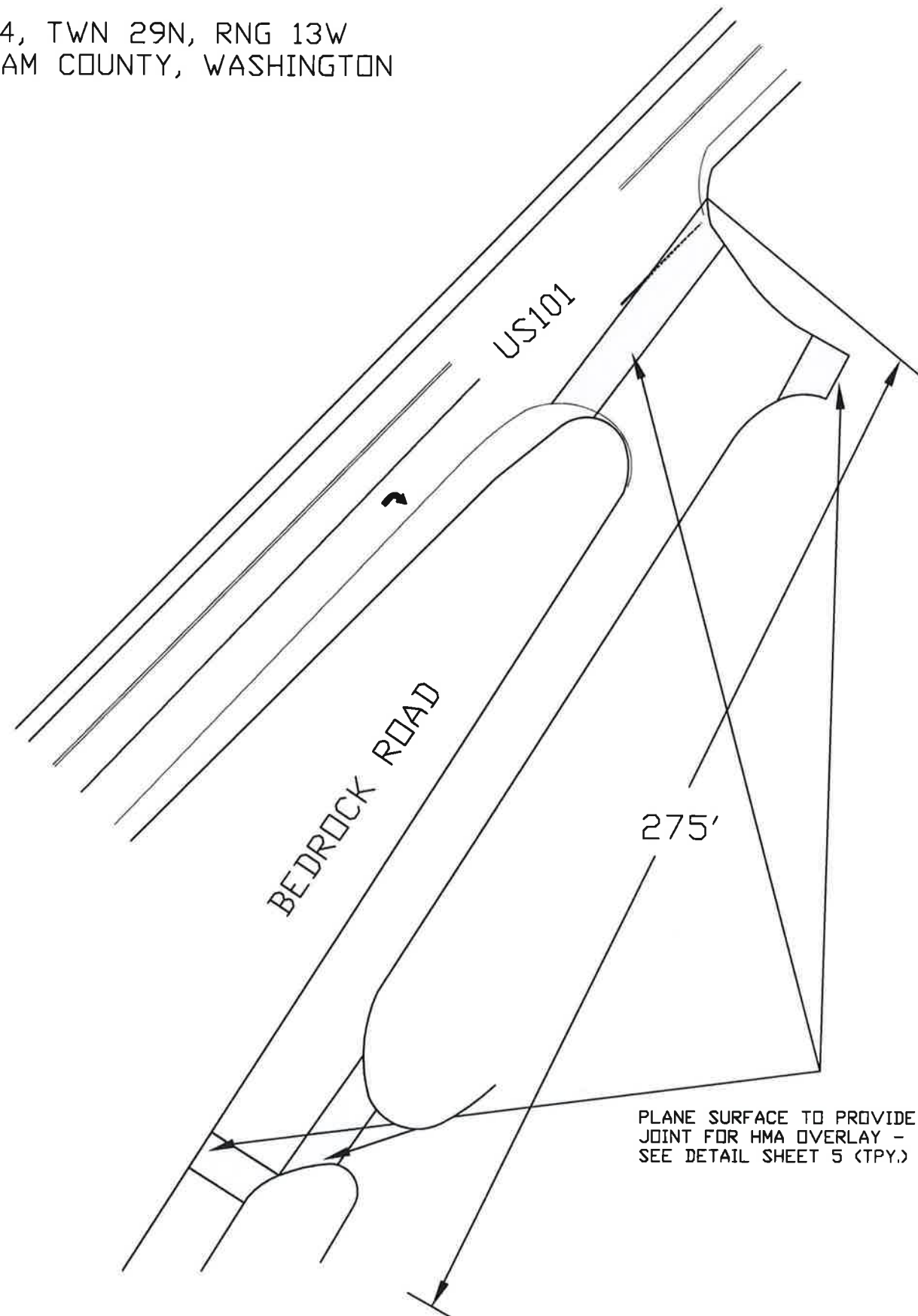


ROSS TYLER, PE  
COUNTY ROAD ENGINEER

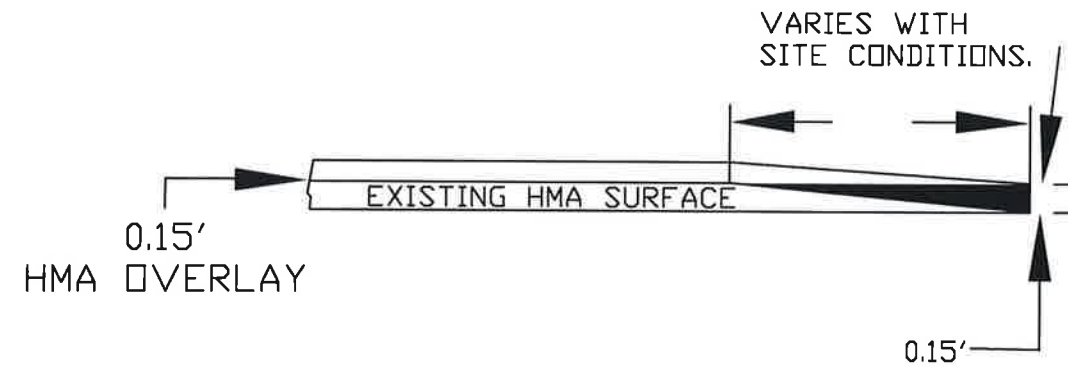
AUTOCAD: S. HOFFMAN SEPTEMBER, 2021

INTERSECTION OF BEDROCK ROAD AND US101

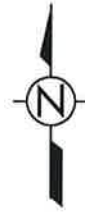
SEC 04, TWN 29N, RNG 13W  
CLALLAM COUNTY, WASHINGTON



PLANE SURFACE TO PROVIDE JOINT FOR HMA OVERLAY.  
TYP. FOR BEGINNING AND END OF PROJECT TRANSITIONS AND COUNTY SIDE ROADS.



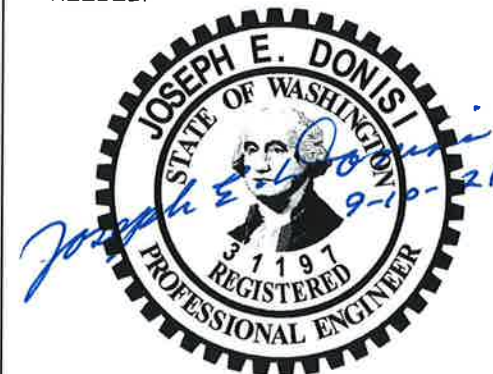
2021 COUNTYWIDE  
OVERLAY PROJECT  
CRP C1258



NO SCALE

GENERAL NOTES:

- 1) HMA OVERLAY DEPTH SHALL NOT EXCEED 0.15' DEPTH.
- 2) TACK COAT SHALL BE APPLIED IN HMA OVERLAY AREAS
- 3) PLANE TO NEW US101 AND SR112 RECENTLY APPLIED CHIP SEAL, AS NEEDED.
- 4) ALL JOINTS SHALL BE SEALED.
- 5) PLACE CRUSHED SURFACING TOP COURSE ALONG SHOULDER EDGE
- 6) REPLACE PAINT LINE AND STOP LINES, AS DIRECTED BY THE ENGINEER.
- 7) DISTANCES SHOWN ON PLAN SHEETS ARE APPROXIMATE, INDIVIDUAL PROJECT LIMITS WILL BE MARKED BY ENGINEER.
- 8) PROVIDE TRAFFIC CONTROL. COORDINATE WITH WSDOT AS NEEDED.



ROSS TYLER, PE  
COUNTY ROAD ENGINEER

AUTOCAD: S. HOFFMAN SEPTEMBER, 2021

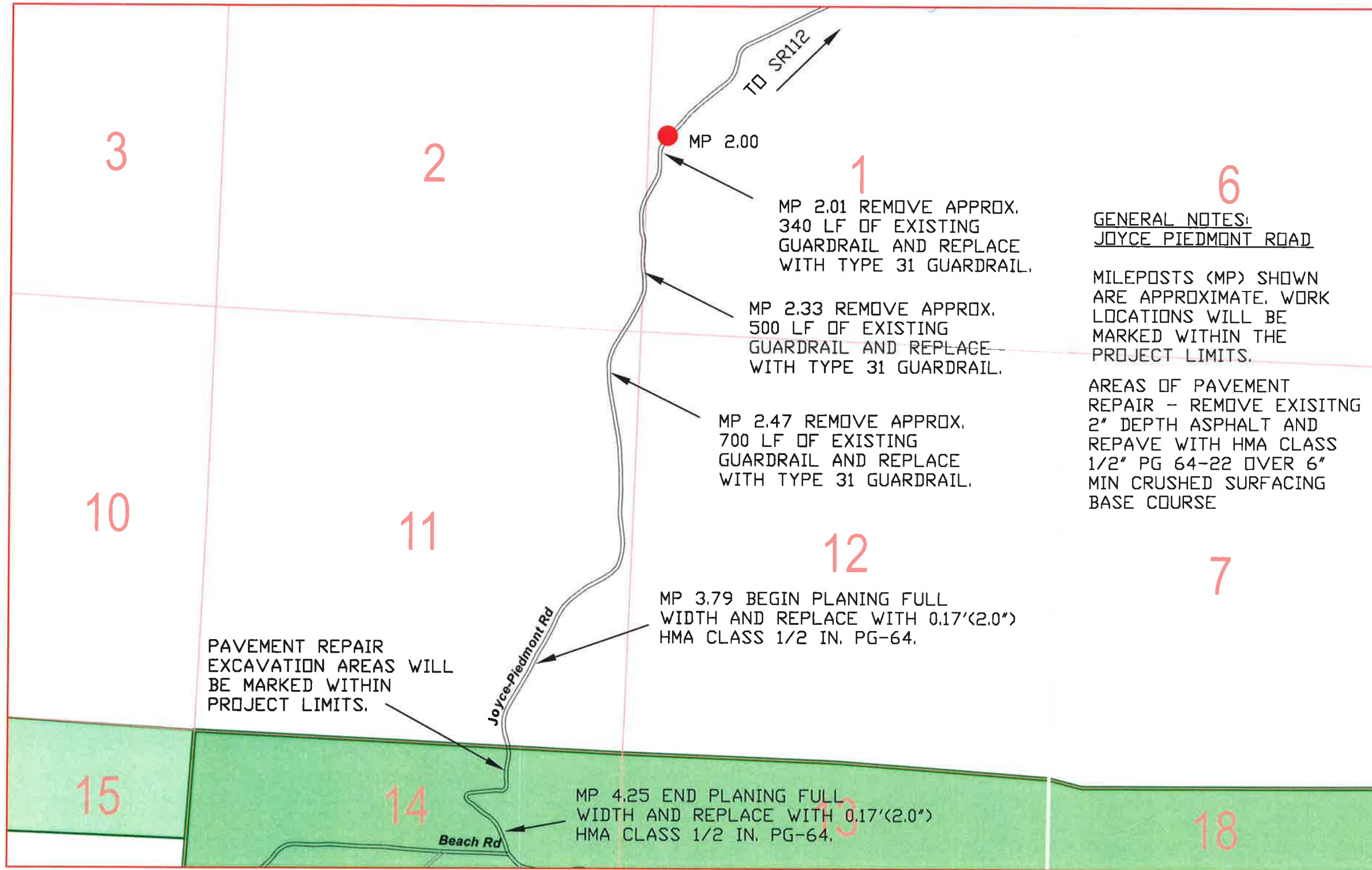
SHEET 5 OF 7

JOYCE PIEDMONT ROAD

2021 COUNTYWIDE  
OVERLAY PROJECT  
CRP C1258



NO SCALE



**GENERAL NOTES:**  
JOYCE PIEDMONT ROAD

MILEPOSTS (MP) SHOWN ARE APPROXIMATE. WORK LOCATIONS WILL BE MARKED WITHIN THE PROJECT LIMITS.

AREAS OF PAVEMENT REPAIR - REMOVE EXISTING 2" DEPTH ASPHALT AND REPAVE WITH HMA CLASS 1/2" PG 64-22 OVER 6" MIN CRUSHED SURFACING BASE COURSE

**GENERAL NOTES:**

- 1) HMA OVERLAY DEPTH SHALL NOT EXCEED 0.17' DEPTH.
- 2) TACK COAT SHALL BE APPLIED IN HMA OVERLAY AREAS
- 3) PLANE TO NEW US101 AND SR112 RECENTLY APPLIED CHIP SEAL, AS NEEDED.
- 4) ALL JOINTS SHALL BE SEALED.
- 5) PLACE CRUSHED SURFACING TOP COURSE ALONG SHOULDER EDGE
- 6) REPLACE PAINT LINE AND STOP LINES, AS DIRECTED BY THE ENGINEER.
- 7) DISTANCES SHOWN ON PLAN SHEETS ARE APPROXIMATE, INDIVIDUAL PROJECT LIMITS WILL BE MARKED BY ENGINEER.
- 8) PROVIDE TRAFFIC CONTROL. COORDINATE WITH WSDOT AS NEEDED.



ROSS TYLER, PE  
COUNTY ROAD ENGINEER

AUTOCAD: S. HOFFMAN      SEPTEMBER, 2021

# HENDRICKSON ROAD

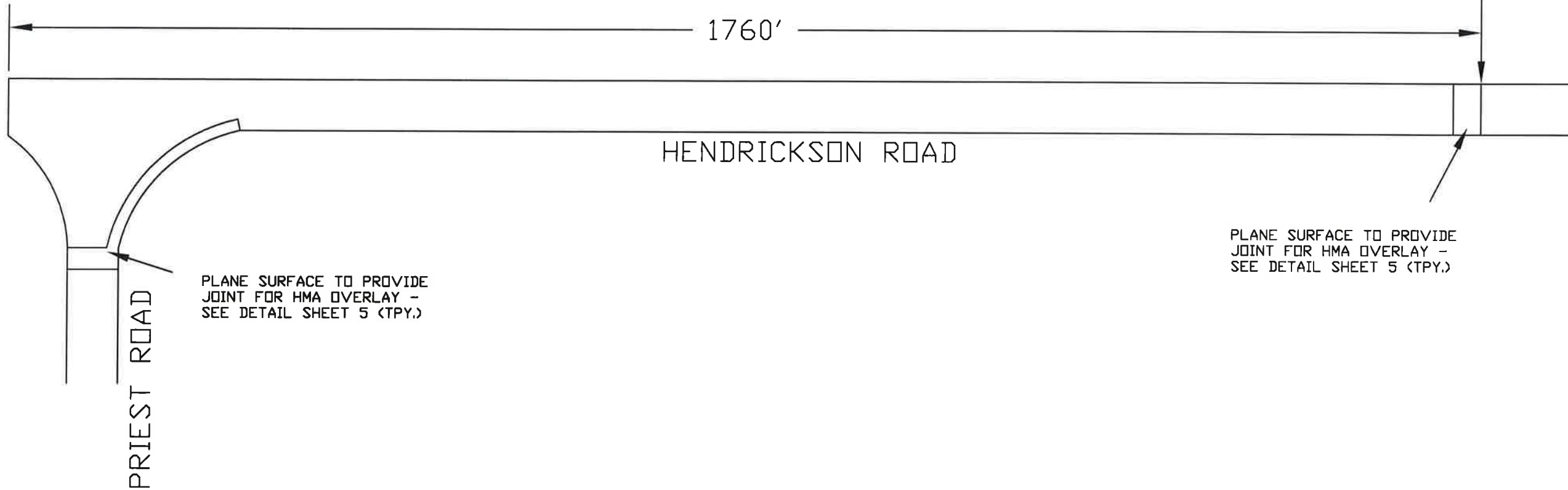
SEC 24, TWN 30N, RNG 04W  
CLALLAM COUNTY, WASHINGTON

2021 COUNTYWIDE  
OVERLAY PROJECT  
CRP C1258



NO SCALE

END OVERLAY AT  
SEQUIM CITY LIMITS.



HENDRICKSON ROAD

PRIEST ROAD

PLANE SURFACE TO PROVIDE  
JOINT FOR HMA OVERLAY -  
SEE DETAIL SHEET 5 (TPY.)

PLANE SURFACE TO PROVIDE  
JOINT FOR HMA OVERLAY -  
SEE DETAIL SHEET 5 (TPY.)

HMA OVERLAY DEPTH SHALL  
NOT EXCEED 0.17'(2.0") DEPTH.

### GENERAL NOTES:

- 1) HMA OVERLAY DEPTH SHALL NOT EXCEED 0.17' DEPTH.
- 2) TACK COAT SHALL BE APPLIED IN HMA OVERLAY AREAS
- 3) PLANE TO NEW US101 AND SR112 RECENTLY APPLIED CHIP SEAL, AS NEEDED.
- 4) ALL JOINTS SHALL BE SEALED.
- 5) PLACE CRUSHED SURFACING TOP COURSE ALONG SHOULDER EDGE
- 6) REPLACE PAINT LINE AND STOP LINES, AS DIRECTED BY THE ENGINEER.
- 7) DISTANCES SHOWN ON PLAN SHEETS ARE APPROXIMATE, INDIVIDUAL PROJECT LIMITS WILL BE MARKED BY ENGINEER.
- 8) PROVIDE TRAFFIC CONTROL. COORDINATE WITH WSDOT AS NEEDED.



ROSS TYLER, PE  
COUNTY ROAD ENGINEER

AUTOCAD: S. HOFFMAN      SEPTEMBER, 2021

SHEET 7 OF 7