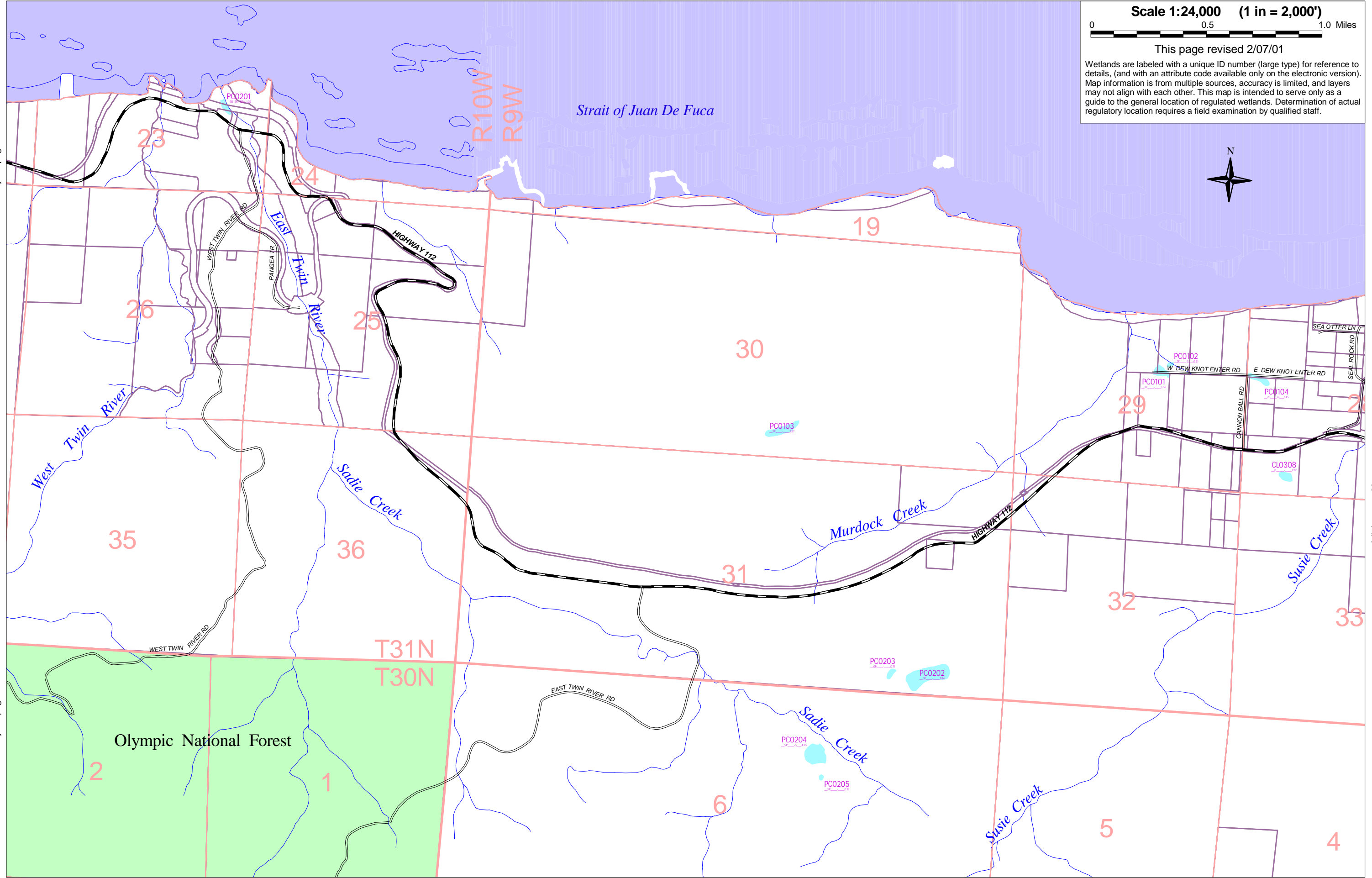


Scale 1:24,000 (1 in = 2,000')

This page revised 2/07/01

Wetlands are labeled with a unique ID number (large type) for reference to details, (and with an attribute code available only on the electronic version). Map information is from multiple sources, accuracy is limited, and layers may not align with each other. This map is intended to serve only as a guide to the general location of regulated wetlands. Determination of actual regulatory location requires a field examination by qualified staff.



Adjoins page 20

Adjoins page 22

Adjoins page 28

Adjoins page 22

Adjoins page 28