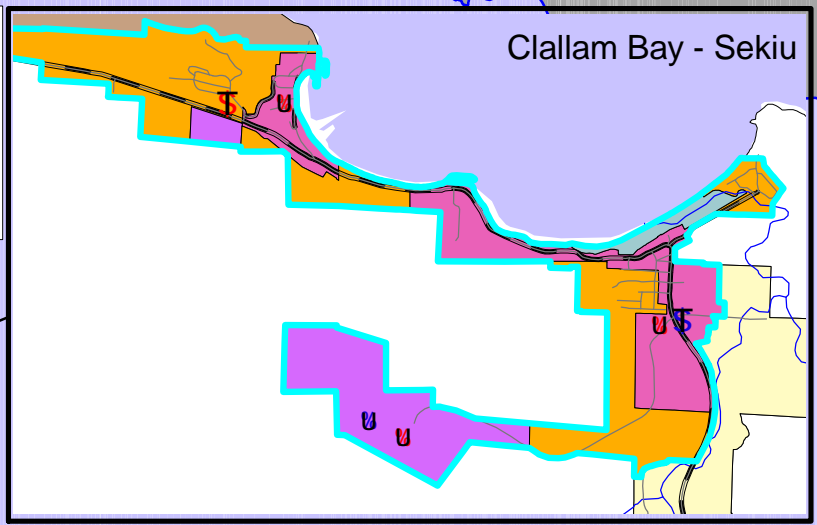


# Non-Residential Building Permit Activity (1990-2003) Western Clallam County

Scale 1:210,000



Clallam County Department of Community Development January 2004



## General Future Land Use

### Natural Resource Lands

- Commercial Forest
- Commercial Forest / Mixed Use
- Agricultural Retention
- Olympic National Forest

### Rural Lands

- Rural Very Low Density
- Rural Character/Rural Low
- Rural Low Density
- Rural Residential

### More Intensive Rural Lands (Outside of Urban Growth Areas)

- Urban Residential
- Rural Center
- Commercial
- Industrial

### Urban Lands (Inside Urban Growth Areas)

- Urban Growth Area
- Urban Residential
- Urban Center
- Commercial
- Industrial
- Cities

## New Building Permits

### 1990-95

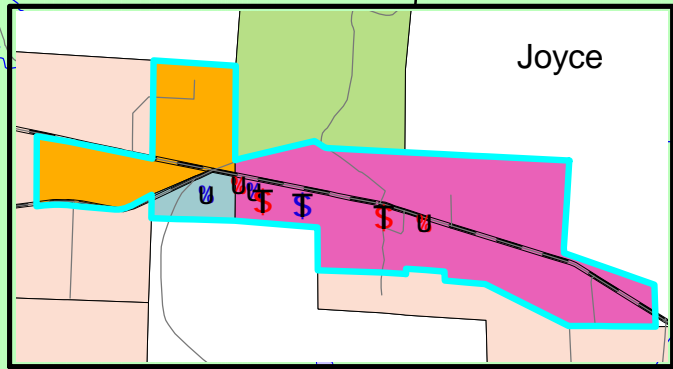
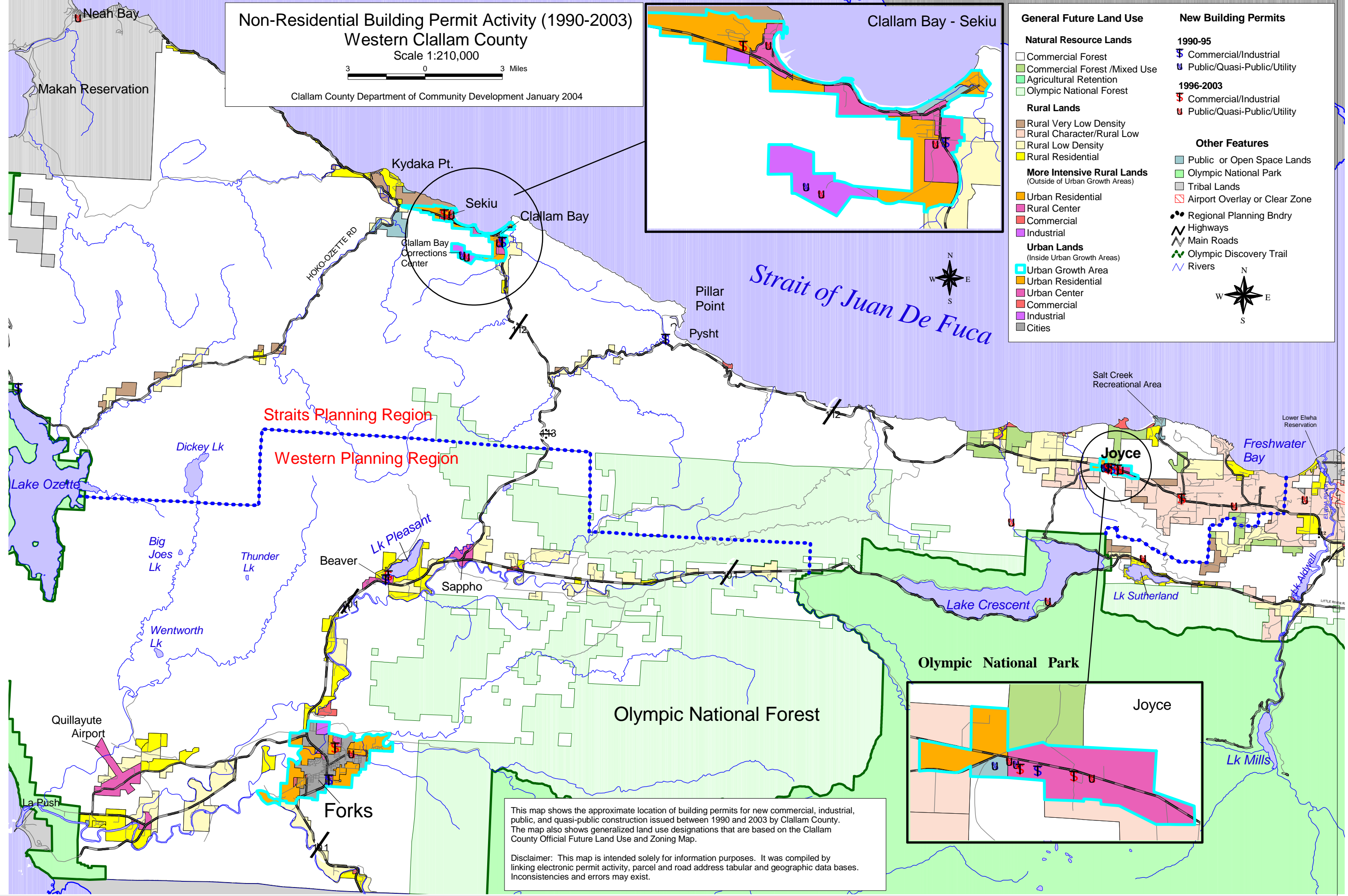
- Commercial/Industrial
- Public/Quasi-Public/Utility

### 1996-2003

- Commercial/Industrial
- Public/Quasi-Public/Utility

## Other Features

- Public or Open Space Lands
- Olympic National Park
- Tribal Lands
- Airport Overlay or Clear Zone
- Regional Planning Bndry
- Highways
- Main Roads
- Olympic Discovery Trail
- Rivers



This map shows the approximate location of building permits for new commercial, industrial, public, and quasi-public construction issued between 1990 and 2003 by Clallam County. The map also shows generalized land use designations that are based on the Clallam County Official Future Land Use and Zoning Map.

Disclaimer: This map is intended solely for information purposes. It was compiled by linking electronic permit activity, parcel and road address tabular and geographic data bases. Inconsistencies and errors may exist.