



SAMPLE BALLOT

OFFICIAL BALLOT
2015 February Special Election
Clallam County, Washington
February 10, 2015

Precinct *Sample*

Instructions

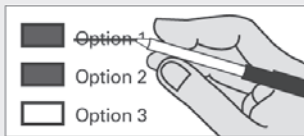
How to vote



Use a dark blue or black ink pen to completely fill in the box to the left of your choice.

Vote for one in each race. If you vote for more than one, no votes will be counted for that race.

If you make a mistake



Draw a line through the entire measure response or candidate's name.

Then you may make another choice.

Online Voters' Guide

Looking for information on the measures? Log on to the **Clallam County website** to find our new **Online Voters' Guide**. Here you will find statements for the measures. www.clallam.net/elections

Replacement ballots and Accessible Voting Units
For a replacement ballot, or for information on **Accessible Voting Units** (available 20 days before Election Day), please call us at: (360) 417-2221.



Who donates to campaigns?

View contributors for candidates and measures

Public Disclosure Commission

www.pdc.wa.gov
Toll Free (877) 601-2828

Hospital District

PROPOSITION NO. 1
PUBLIC HOSPITAL DISTRICT NO. 1
OF CLALLAM COUNTY
(FORKS COMMUNITY HOSPITAL)
REGULAR PROPERTY TAX LEVY

The Commission of Public Hospital District No. 1 (Forks Community Hospital) adopted Resolution No. 2014-495 concerning a proposition authorizing an emergency medical care and services levy. This proposition authorizes the District to levy regular property taxes at the rate of 24 cents or less per \$1,000 of assessed value, beginning with taxes payable in 2016 and continuing for six consecutive years, to provide funds for emergency medical care or services in the district, including personnel and training costs, equipment, supplies, vehicles and structures, as provided in Resolution No. 2014-495. Should this proposition be:

APPROVED

REJECTED

School District

PROPOSITION 1
PORT ANGELES SCHOOL DISTRICT NO. 121
REPLACEMENT MAINTENANCE AND OPERATION LEVY

The Board of Directors of Port Angeles School District No. 121 adopted Resolution No. 1415-08, concerning a proposition to finance maintenance and operation expenses. This proposition would authorize the District to levy the following excess taxes, in place of an expiring levy, upon all taxable property within the District, for support of the District's General Fund educational maintenance and operation expenses:

Collection Year	Approximate Levy Rate/\$1,000 Assessed Value	Levy Amount
2016	\$3.26	\$8,637,144
2017	\$3.26	\$8,723,516

all as provided in Resolution No. 1415-08. Should this proposition be approved?

LEVY...YES

LEVY...NO



SAMPLE BALLOT

OFFICIAL BALLOT
2015 February Special Election
Clallam County, Washington
February 10, 2015

Precinct *Sample*

PROPOSITION 2
PORT ANGELES SCHOOL DISTRICT NO. 121
BONDS TO CONSTRUCT A NEW HIGH SCHOOL

The Board of Directors of Port Angeles School District No. 121 adopted Resolution No. 1415-07, concerning a proposition to finance construction of a new high school. This proposition would authorize the District to: construct a new high school on the existing site to replace Port Angeles High School and renovate the Performing Arts Center; issue no more than \$98,254,000 of general obligation bonds maturing within 25 years; and levy annual excess property taxes to repay the bonds, all as provided in Resolution No. 1415-07. Should this proposition be:

- Approved
- Rejected

PROPOSITION NO. 1
SEQUIM SCHOOL DISTRICT NO. 323
SCHOOL IMPROVEMENTS GENERAL OBLIGATION BONDS -
\$49,265,000

The Board of Sequim School District No. 323 adopted Resolution No. 02-2014/2015 concerning capital improvements to District facilities. This proposition authorizes the District to renovate Greywolf Elementary School to increase its capacity, repurpose Haller Elementary, construct a new elementary school, expand the capacity of Sequim High School, improve school safety and security, and make other capital improvements, and authorizes the District to issue \$49,265,000 of general obligation bonds maturing within a maximum term of 20 years and levy annual excess property taxes to repay the bonds, as provided in Resolution No. 02-2014/2015. Should this proposition be:

- APPROVED
- REJECTED

Parks & Recreation District

PROPOSITION NO. 1
PARK AND RECREATION DISTRICT NO. 1
OF CLALLAM COUNTY
REGULAR PROPERTY TAX LEVY

The Board of Park and Recreation District No. 1 of Clallam County, doing business as the SEQUIM AQUATIC RECREATION CENTER (SARC), adopted Resolution No. 9-10-14-1, concerning authorization to collect regular property tax levies of TWELVE CENTS (\$0.12) or less per thousand dollars of assessed valuation for each of SIX (6) consecutive years commencing in 2016, to be used for the maintenance and operation of SARC. Should this proposition be:

- APPROVED
- REJECTED